

## Technical Data Sheet

Ref.: C&L-Ga-22-010621-01

<b>In Compliance With</b> EN norms	Walnut Grout admix is a unique Eco-friendly polymer liquid, based on high quality latex to provide excellent compressive & flexural strength, water & stain resistance and colour stability to cement based grouts. It can be mixed with Lite & Stucco grout as replacement of water when grouting to be done in demanding condition such as bathrooms, industrial floors or open areas. It can be applied up to 12 mm. wide joints or more based upon mixed with Lite or Stucco grout.
<b>Main application</b> Admix for Lite & Stucco range of grouts to increase compressive & flexural strength significantly. It also imparts greater resistance to abrasion & color stability.	

### Technical advantage of Connect & Lock Grout Admix

- Suitable for filling joints in all type of ceramic & vitrified tiles, all type of stone & mosaic.
- Highly recommended in areas where resistance to mold and fungal needed.
- Best of workability, cleaning and easy to use.
- High compressive & flexural strength. High resistance to abrasion.
- Provide excellent color stability to cement based grouts.
- Best for lite uses and for renovation work.
- Highly water resistance.
- Requires no water curing.
- Suitable for external & internal.
- High coverages with best of performance even in fine joints.
- Economic & best value when used with Walnut Lite Grout.
- Very low VOC and suitable for green building credit points.

### Suitable areas

- Internal & external wall & floor.
- Residential & commercial buildings.
- Public infrastructure projects.

### Suitable materials for grouting

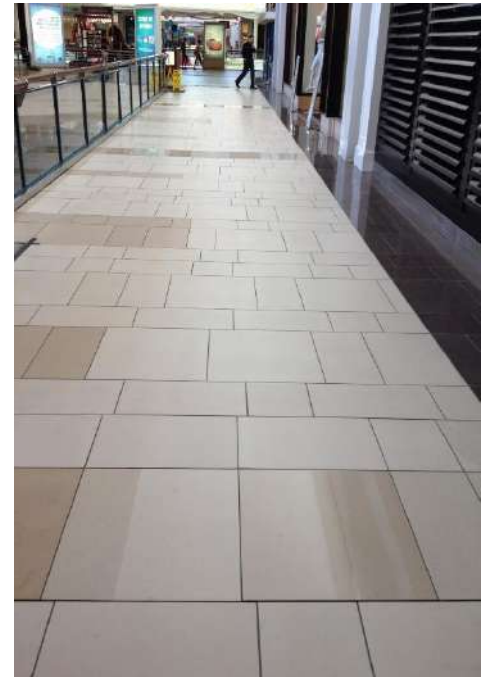
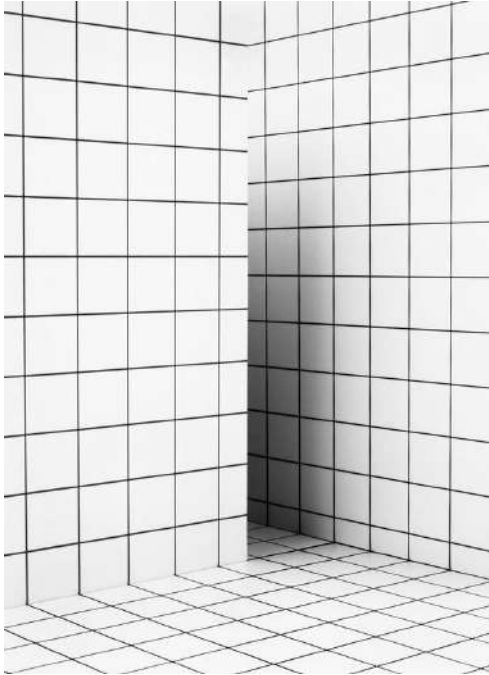
- All type & size of ceramic & vitrified tiles joint.
- All type & size of ceramic & glass mosaic joint.
- All type of natural and recomposed stone.
- Large format tiles of all type including low thickness vitrified slabs of upto 3 mm. thickness.

### Product not to be used

- On metal, wood & rubber surfaces.
- Tiles or stone which are absorbent and colour pigment can dis-colour the surface. (Test small area first).
- More than 12 mm. of joints.
- As waterproofing & chemical resistance grout.
- In expansion & connection joints.
- Joints with standing water and rising moisture.

# Technical Data Sheet

## How to Use



### Important tools for application:

- Electric low speed mixing stirrer.
- Vacuum cleaner / blower to remove the dust from joint.
- Walnut rubber grout float.
- Cleaning sponge of good quality.
- Other mixing & finishing tools such as mixing trowel, bucket, brush, broom, measuring tape etc.

### Cleaning of tools:

While still the material is fresh, all the tools can be cleaned with normal water. Once material is hardened, the material can be removed only by mechanical means.

### Surface Preparation:

- First check that tiles or stone are fixed properly and are not sounding hollow. In case sounding hollow, first repair or replace the tiling area.
- Ensure that joints are clean and free from all foreign material such as oil, grease, dust etc. In case dust or cement particles are stuck inside joint, use vacuum cleaner or blower to remove the same. Grout remover tool also can be used in case old grout to be removed.
- In case working on external façade or on floor joints, avoid applying grout on hot surface. First, let cool the surface of tiles or stone and don't work under direct sun. Hot surface may compromise final performance grout.
- In case of high absorbent tiles or stone surfaces, before starting the application, first apply the grout colour in small test patch area. In case dis-colouration of surface occurs, then consult Walnut technical representative and stop the application.
- In case tiles or stone are rustic in nature and having un-even surfaces, it is possible that grout residual will remain on the surface while final cleaning. It is better to avoid applying grout on entire surface area. In this case, edges of tiles or stone can be masked by applying suitable masking tape and can be removed post cleaning of grouts.

### Mixing:

- Mix Lite or Stucco Grout with correct qty. of Grout Admix. Ideally for Lite Grout 400 Ml. / 1 Kg. and for Stucco Grout 275 Ml. / 1 Kg. of Grout Admix will be needed. Use slow speed electric stirrer for mixing to have desired results. Manual mixing can compromise performance of grout and colour can be uneven on final surface.
- Adjust the Grout Admix quantity as per ambient temperature and dryness of surface and joints. The final mix must be workable paste.

### How to apply:

- Spread the grout evenly on the surface of tiles or stone to cover the area.
- Once grout is spread, fill the joint tightly using rubber grout float. Keep the rubber float diagonally to the joint and apply 45 degree angle to have perfect filling.
- Once all the joints are filled properly, remove excess grout if any from the surface of tiles or stone.
- Leave the grout for surface touch dry. Once the top surface of grout becomes touch dry, apply small amount of water all over the tiles surface to wet the entire area. Apply the sponge in circular motion all over the joints. Finish the joint smoothly and evenly. (In case excess water is used, it is possible that pigments from top surface are washed away and final colour of grout may be affected).

## Product & Working Data

Product appearance	: White or off-white liquid
Packing	: 400 Grm.   1 Kg. & 5 Kg.
Shelf life	: 12 months from the date of manufacturing.
Mixing Ratio	: Approx. 400 Grm. for 1 Kg. of Lite Grout & 275 Grm. for 1 Kg. of Stucco Grout.
Pot life	: > 60 Minutes
Width of Joint	: up to 12 mm. (Depends on grout selected)
Initial setting	: 6 to 8 hours.
Final setting	: 24 hours.
Grouting when fixed with adhesive	: after 24 hours
Grouting when fixed with wet mortar	: after 2 to 3 weeks.
Foot traffic and lite uses	: After 24 hours.
Full strength of grout	: At 28 days.
Coverage	: Based on joint width, depth & size of tiles. Refer the coverage chart.
Application temperature	: + 5* C. to + 35 * C.

(Date @ 23° C. & 50% humidity)

## Technical Performances

### Test data of Grout Admix when mixed with Lite or Stucco Grout: (In compliance with EN 13888)

Compressive strength	: ≥ 25 N / mm <sup>2</sup>	: As per EN 12808-3
Flexural strength	: ≥ 10 N / mm <sup>2</sup>	: As per EN 12808-3
Abrasion resistance	: ≤ 2000 mm <sup>3</sup>	: As per EN 12808-2
Water absorption after 4 hours.	: < 3.5%	: As per EN 12808-5
(Final results @ 28 days. 23* C. & 50% humidity)		

- Final resistance to temperature after 28 days or full cure: - 30 to + 80 \* C.
- The final results may vary based on temperature and humidity.

## Walnut exclusive technology



## Important instructions

- Once container is open, entire material must be consumed within 24 hours. Store the container in safe environment.
- Shake well before use.
- In case of very weak surface, please ensure that proper strength or correction are done before start using.
- If temperature is more than 35° C., than avoid using the products under direct sun.
- In case temperature is cold and below 5° C., the initial and final setting may affect.
- Expansion & connection joint must be followed of concrete and all other elements of concrete structure.
- For any structure related issue, follow local code and appropriate consultant guidelines.
- In case the performance of Walnut products is not as per technical data mentioned, please call Walnut technical helpline.

## Walnut Green Building Index



Walnut range of products are most eco-friendly and suitable to use in all kind of buildings including certified green. Apart from using best of international raw material for best performance, Walnut procure the major raw material locally to safeguard environment.

## Walnut Quality & Safety Assurance



Products supplied are safe to use by any worker at site. However proper tools and safety measures must be in place for prolong working. The gloves, safety glasses and other protection measure must be followed as per local regulation.

## Declaration

All the above information and results are provided based on Walnut internal quality test. Customer must check before using the product about performance and final expected results. Walnut cannot be held responsible for any damage of whatsoever nature at site.

## Technical Help

**Walnut Building Solutions India Private Limited | CIN: U36999MH2017PTC289638**

IJMIMA, 804, 8<sup>th</sup> floor, Behind Goregaon sports club, off link road, Malad West, Mumbai – 400064

Technical services & customer care: +91-22-49713322 / +91 9967007783 | email: info@wallnut.co.in